



HR2093
HR2095
HR2096
HR2097
HR2195
HR2196
RI2095
RI2096

Philips Consumer Life Style

Service Manual

TECHNICAL INFORMATION

- Power : 800 W for HR2093,HR2096,HR2097,HR2195(Korea),RI2096;
: 700 W for HR2095/RI2095;
: 900 W for HR2196/HR2195
- Cord length : 1.0 m
- Voltage / frequency : 220 - 240V / 50 - 60 Hz(High Voltage), 110 V / 60 Hz(Low Voltage)
- Effective jar capacity : 1.5 L
- Capacity blender jar : 2 L
- Max jar capacity : 2 L
- Dimensions (L x W x H) : 180 x 180 x 430mm(product)
- Color : White for 0X version ; Black for 9X version

Materials:

- Housing : SUS wrap with plastic; PP for HR2095
- Blade : Stainless steel
- Blender jar : Glass for HR2093/2095/2096/2195/2196/RI2095/2096, stainless steel for HR2097

ASSEMBLY & DISASSEMBLY ADVICE

- No specific issues

OPTIONAL (accessories)

- No specific issues

Safety

- This product meets the requirements regarding interference suppression on radio and TV.
- After the product has been repaired, it should function properly and has to meet the safety requirements as officially laid down at this moment.

Partslists

HR2093 HR2095 HR2096 HR2097 HR2195 HR2196 RI2095 RI2096

Pos	12NC	Description	Remark
1	996510056474	DRIVING COUPLING ASSY	
2	996510070107	HOUSING NEW	For HR2096,2097
	996510070111	HOUSING CHINA NEW	For HR2096/00 China version
	996510070109	HOUSING BRA NEW	For RI2096
	996510070108	HOUSING TW NEW	For HR2096/02 TW version
	996510070193	HOUSING (O.4MM METAL WRAP)	For HR2093
	996510056489	HOUSING WEU WHITE-NOT SHOWN	For HR2095/30/31 exclude China
	996510056493	HOUSING WEU BLACK	For HR2095/90/91 exclude China
	996510056486	HOUSING CN VERSION BLACK-NOT SHOWN	For HR2095/90 China version
	996510058303	HOUSING CN VERSION WHITE	For HR2095/30 China version
	996510058299	HOUSING BLACK BRA	For RI2095
	996510064113	HOUSING BLACK TW VERSION	For HR2095/92 TW version
	996510071748	HOUSING	For HR2196
	996510072935	HOUSING	For HR2195
	996510072994	HOUSING + KNOB PANEL WEU(GERMANY ONLY)	For HR2096/00220 Germany Version
3	996510063535	BOTTOM NEW	
4	996510056461	RUBBER FEET	
5	996510056475	SAFETY LEVER	
6	996510069957	MAIN PCBA(CONNECT TO KNOB PANEL)	For HR2096,2097,2196,RI2096/00
	996510069334	MAIN PCBA LV(CONNECT TO KNOB PANEL)	For RI2096/01
	996510069335	MAIN PCBA(CONNECT TO KNOB PANEL)	For HR2096/02 TW version
	996510069958	MAIN PCBA(CONNECT TO KNOB PANEL)	For HR2093
	996510063536	MAIN PCBA(CONNECT TO KNOB PANEL)	For HR2095,RI2095/90
	996510069333	MAIN PCBA LV(CONNECT TO KNOB PANEL)	For RI2095/91
	996510069336	MAIN PCBA(CONNECT TO KNOB PANEL)	For HR2095/92 TW version
	996510072937	MAIN PCBA(CONNECT TO KNOB PANEL QUIET)	For HR2195
7	996510063538	PCBA	
	996510059184	PCBA LV	For RI2096/01,HR2096/02
	996510065754	PCBA MTP VERSION	For JK MTP motor version & HR2093
	996510071266	POWER PCBA HV	For HR2095,RI2095/90
	996510071267	POWER PCBA LV	For RI2095/91,HR2095/92
	996510071268	POWER PCBA CCC	For China version

Partslists

HR2093 HR2095 HR2096 HR2097 HR2195 HR2196 RI2095 RI2096

Pos	12NC	Description	Remark
8	996510065753	JK CU MOTOR WITH MTP	Just for HR2093
	996510066362	JK CU MOTOR WITHOUT MTP	For HR2096 Korea version
	996510073001	JK CU MOTOR WITH MTP (KOREA)	For HR2095/90 & HR2097/00 Korea version
	996510070326	MOTOR ASSY(ALU motor without MTP)	For RI2095&RI2096 HV version
	996510070325	MOTOR ASSY(ALU motor with MTP)	All WEU and APMEA version except Korea, China and Taiwan & HR2195 All WEU & Korea
	996510066361	JK MOTOR ASSY CHINA VERSION	For HR2095&HR2096/00 China version
	996510072124	MOTOR ASSY (LV motor with MTP)	For RI2095/91&RI2096/01 Brazil LV version, HR2095/92&HR2096/02 Taiwan Version
9	996510069149	KNOB PANEL WEU	For HR2096(excluded China, TW & Germany), RI2096, HR2097
	996510069153	KNOB PANEL CHINA VERSION	For HR2096/00 China version
	996510069152	KNOB PANEL TW	For HR2096/02 TW Version
	996510069753	KNOB PANEL	For HR2093
	996510069145	KNOB PANEL WEU WHITE-NOT SHOWN	For HR2095/30/31
	996510069147	KNOB PANEL WEU BLACK	For HR2095/90/91 & RI2095, HR2196
	996510069148	KNOB PANEL CN BLACK-NOT SHOWN	For HR2095/90 China version
	996510069146	KNOB PANEL CN WHITE- NOT SHOWN	For HR2095/30 China version
	996510069151	KNOB PANEL BLACK TW	For HR2095/92 version
	996510072934	KNOB PANEL SPRAY PAINT(QUIET)	For HR2195
10	996510056462	INTERLOCK SUPPORT + WIRE	
11	996510061615	SPATULA	
12	996510056473	MEASURING CUP	
13	996510056467	JAR LID	For HR2096/RI2096/2093/2196/2195
	996510059678	JAR LID	For HR2097
14	996510061668	COLLAR	For HR2096/RI2096/2093/2195
	996510061776	COLLAR	For HR2097
15	996510069956	KNIFE UNIT JAR AND SEALING RING	
16	996510060779	XBJ GLASS JAR FOR HR2095/2096	HR2093, HR2195 & See page 5
	996510069749	NEW SODALIME GLASS JAR FOR HR2095/2096	See page 5 for where it using for
	996510059681	STAINLESS STEEL JAR	For HR2097

New Glass jar implement country list

HR2093

HR2095

HR2096

HR2097

HR2195

HR2196

RI2095

RI2096

Country list : which country will use what kind of glass jar

	XBJ Glass Jar	Sodalime Glass jar
Germany	Y	
France	Y	
Iberia	Y	
Italy	Y	
Benelux	Y	
Nordic	Y	
Chili Santiago		Y
CE Iquique		Y
Dubai	Y	
Peru		Y
Uruguay		Y
Chile		Y
Poland	Y	
Russia	Y	
CEE	Y	
Ukraine	Y	
Hong Kong	Y	
UK	Y	
Thailand		Y
Malaysia		Y
Singapore		Y
Taiwan	Y	
Australia	Y	
Switzerland	Y	
China	Y	
South Korea		Y
Brazil	Y	

HR2096/HR2097 JK motor with MTP implement country

Region	12NC	Implement Country
WEU (SS body)	883209600010	WEU (Germany, Iberia, France, Italy, Benelux, Nordic), Dubai (2-pin), South Africa
WEU (SS jar)	883209700010	France, Peru

Main Units

HR2093 HR2095 HR2096 HR2097

HR2195 HR2196 RI2095 RI2096

1



2 (second for HR2093)



3



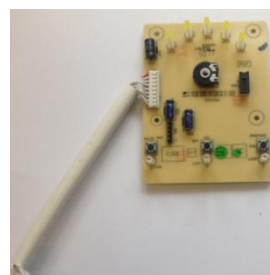
4



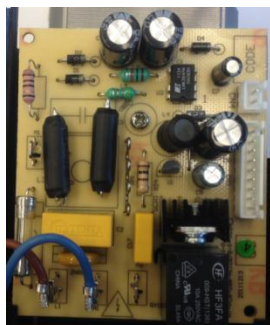
5



6



7



8



9



10



19



17



18



Accessory view

HR2093 HR2095 HR2096 HR2097
HR2195 HR2196 RI2095 RI2096

11



14(right for HR2097)



12



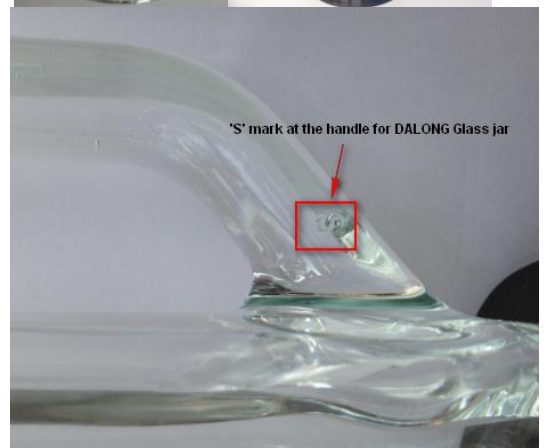
15



13(right for HR2097)

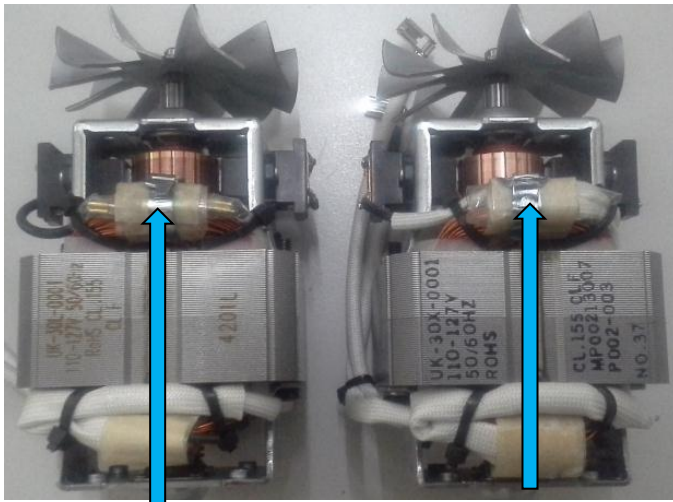


16(right for HR2097)



Remark:

RI2095/91 & RI2096/01 Brazil version and HR2095/92 & HR2096/02 Taiwan ,
Change LV Motor with fuse(12NC#996510058297) to LV motor with MTP(12NC#996510072124),
Implement wk1449 for Brazil version and Taiwan as running change to consume the stock and
target to implement in 2015.



Thermal Fuse

MTP

Revision List

HR2093 HR2095 HR2096 HR2097 HR2195 HR2196 RI2095 RI2096

1	Version A : Initial release.
2	Version B : Adding HR2096/03,RI2096&HR2095/30 China version and RI2095
3	Version C : Correct the supplier's error about the factory code of position 7, so the part 12NC updated; HR2095 Glass jar source change to XBJ and Dalong, and add country list for which country use what kind of glass jar.
4	Version D : Add HR2097; Update spatula and knife unit, old and new ones are interchangeable, also update collar-only HR2095
5	Version E : Glass jar source change to XBJ and Dalong, and add country list for which country use what kind of glass jar-for HR2093,HR2096,HR2097
6	Version F : Update spatula and knife unit, old and new ones are interchangeable, and update collar, also add powercord for HR2096/04 Switland.
7	Version G : Update base cover cord hole. also update PCBA and MAIN PCBA which old and new are interchangeable.
8	Version H : Update flange add on three button holes to avoid button jammed issue. All old housing are deleted and change to new housing.
9	Version I : Add HR2096/02 TW version; Implement JK motor and JK MTP motor, JK motor is interchangeable with the formerly motor, but JK MTP motor must use with new main PCBA together-only HR2095
10	Version J: Add HR2096/00 Korea version; Knob panel update, old and new are interchangeable-only HR2095
11	Version K: Implement JK motor and JK MTP motor, JK motor is interchangeable with the formerly motor, but JK MTP motor must use with new main PCBA together-for HR2093,HR2096,HR2097
12	Version L: Knob panel update, old and new are interchangeable.
13	Version M: update TW & LV Main PCBA, old and new are interchangeable, move 996510065754 from item 6 to 7 which is provided wrong information by Supplier before.
14	Version N: implement JK motor for Korea.
15	Version O: update housing thickness, old and new are interchangeable.
16	Version P: Dalong glass jar change supplier.
17	Version Q: add HR2093 and update pos 6 & 15.
18	Version R: HR2096,RI2096 and HR2097 change housing.
19	Version S: change Motor to ALU motor----WK1417.
20	Version T: delete JK motor assy (12NC:996510066362) from all WEU models; change ALU motor without MTP(12NC:996510070326) to ALU motor with MTP (12NC:996510070325) for all APMEA versions except China, Taiwan and Korea; change ALU motor without MTP(12NC:996510070326) to JK motor assy(12NC:996510066362) for Korea version----WK1425.
21	Version U: (Only HR2095&RI2095)For quality issue, change PCBA HV from 996510056485 to 996510071266, PCBA LV from 996510058387 to 996510071267, and China version from 996510056485 to 996510071268 . The old stocks are hold, supplier may send replacements---WK1434.
22	Version V: add new model HR2196 into service manual.---wk1449
23	Version W: Change LV motor with fuse(12NC#996510058297) to LV motor with MTP(12NC#996510072124) for RI2095/91 & RI2096/01 Brazil LV version. Implement wk is wk1449. --- wk1452
24	Version X: Change LV motor with fuse(12NC#996510058297) to LV motor with MTP(12NC#996510072124) for HR2095/92&HR2096/02 Taiwan version. Running change to consume the stock and target to implement in 2015. --- wk1502
25	Version Y: Add new spare part INTERLOCK SEAL HOLDER WITHOUT SPRING (12NC#996510072936)on position 19 for all models. --- wk1505
26	Version Z: Add new model HR2195/00, HR2195/01, HR2195/04, HR2195/07, HR2195/08 (New model with quiet system). --- wk1505
27	Version 1: Change HR2096/00 Germany version to 2 in 1 housing(Housing + Knob Panel) (12NC#996510072994). --- wk1511 S&C SDA_109609 as below: Symptom: Attention for HR2096/00 Avance Blender Housing & Panel parts — for Germany only. Cure: Change HR2096/00 Housing & Panel two separate parts <housing (12NC#996510070107) & knob panel (12NC#996510069149)> to one combined part <2 in 1 housing(12NC#996510072994)> which is only for Germany. The impletion date is wk1512. The new 2 in 1 housing(HOUSING + KNOB PANEL WEU(GERMANY ONLY), 12NC#996510072994) can be used on older sets manufactured before the date code wk1512. The old housing (12NC#996510070107) & knob panel (12NC#996510069149) cannot be used on newer sets manufactured after the date code wk1512. No special repairing instruction.

Revision List

**HR2093 HR2095 HR2096 HR2097
HR2195 HR2196 RI2095 RI2096**

28

Version 2 : Change the motor from 996510066362 (JK CU MOTOR WITHOUT MTP) to 996510073001(JK CU MOTOR WITH MTP) for HR2095/90 & HR2097/00 Korea version base on CP1339 . Implementation wk1519. --- wk1514