

Service  
Service  
Service



HR2093  
HR2095  
HR2096  
HR2097  
HR2195  
HR2196  
RI2095  
RI2096

Philips Consumer Life Style

# Service Manual

## TECHNICAL INFORMATION

- Power : 800 W for HR2093,HR2096,HR2097,HR2195(Korea),RI2096;  
: 700 W for HR2095/RI2095;  
: 900 W for HR2196/HR2195
- Cord length : 1.0 m
- Voltage / frequency : 220 - 240V / 50 - 60 Hz(High Voltage), 110 V / 60 Hz(Low Voltage)
- Effective jar capacity : 1.5 L
- Capacity blender jar : 2 L
- Max jar capacity : 2 L
- Dimensions (L x W x H) : 180 x 180 x 430mm(product)
- Color : White for 0X version ; Black for 9X version

## Materials:

- Housing : SUS wrap with plastic; PP for HR2095
- Blade : Stainless steel
- Blender jar : Glass for HR2093/2095/2096/2195/2196/RI2095/2096, stainless steel for HR2097

## ASSEMBLY & DISASSEMBLY ADVICE

- No specific issues

## OPTIONAL (accessories)

- No specific issues

## Safety

- This product meets the requirements regarding interference suppression on radio and TV.
- After the product has been repaired, it should function properly and has to meet the safety requirements as officially laid down at this moment.

**Partslists****HR2093 HR2095 HR2096 HR2097  
HR2195 HR2196 RI2095 RI2096**

Pos	12NC	Description	Remark
1	996510056474	DRIVING COUPLING ASSY	
2	996510070107	HOUSING NEW	
	996510070111	HOUSING CHINA NEW	For HR2096/00 China version
	996510070109	HOUSING BRA NEW	For RI2096
	996510070108	HOUSING TW NEW	For HR2096/02
	996510070193	HOUSING (O.4MM METAL WRAP)	For HR2093
	996510056489	HOUSING WEU WHITE-NOT SHOWN	For HR2095/30/31
	996510056493	HOUSING WEU BLACK	For HR2095/90/91 exclude China
	996510056486	HOUSING CN VERSION BLACK-NOT SHOWN	For HR2095/90 China version
	996510058303	HOUSING CN VERSION WHITE	For HR2095/30 China version
	996510058299	HOUSING BLACK BRA	For RI2095
	996510064113	HOUSING BLACK TW VERSION	For /92 version
	996510072935	HOUSING	For HR2195
3	996510063535	BOTTOM NEW	
4	996510056461	RUBBER FEET	
5	996510056475	SAFETY LEVER	
6	996510069957	MAIN PCBA(CONNECT TO KNOB PANEL)	
	996510069334	MAIN PCBA LV(CONNECT TO KNOB PANEL)	For RI2096/01
	996510069335	MAIN PCBA(CONNECT TO KNOB PANEL)	For HR2096/02
	996510069958	MAIN PCBA(CONNECT TO KNOB PANEL)	For HR2093
	996510063536	MAIN PCBA(CONNECT TO KNOB PANEL)	For HR2095,RI2095/90
	996510069333	MAIN PCBA LV(CONNECT TO KNOB PANEL)	For RI2095/91
	996510069336	MAIN PCBA(CONNECT TO KNOB PANEL)	For /92 version
	996510072937	MAIN PCBA(CONNECT TO KNOB PANEL QUIET)	For HR2195
7	996510063538	PCBA	
	996510059184	PCBA LV	For RI2096/01,HR2096/02
	996510065754	PCBA MTP VERSION	For JK MTP motor version & HR2093
	996510071266	POWER PCBA HV	For HR2095,RI2095/90
	996510071267	POWER PCBA LV	For RI2095/91,HR2095/92
	996510071268	POWER PCBA CCC	For China version

## Partslists

# HR2093 HR2095 HR2096 HR2097

# HR2195 HR2196 RI2095 RI2096

Pos	12NC	Description	Remark
8	996510065753	JK MOTOR WITH MTP	Just for HR2093
	996510066362	JK MOTOR ASSY	For HR2095&HR2096 Korea version
	996510070326	MOTOR ASSY(ALU motor without MTP)	For RI2095&RI2096 HV version
	996510070325	MOTOR ASSY(ALU motor with MTP)	All WEU and APMEA version except Korea, China and Taiwan & HR2195 All WEU & Korea
	996510066361	JK MOTOR ASSY CHINA VERSION	For HR2095&HR2096/00 China version
	996510072124	MOTOR ASSY (LV motor with MTP)	For RI2095/91&RI2096/01 Brazil LV version, HR2095/92&HR2096/02 Taiwan Version
9	996510069149	KNOB PANEL WEU	
	996510069153	KNOB PANEL CHINA VERSION	For HR2096/00 China version
	996510069152	KNOB PANEL TW	For HR2096/02
	996510069753	KNOB PANEL	For HR2093
	996510069145	KNOB PANEL WEU WHITE-NOT SHOWN	For HR2095/30/31
	996510069147	KNOB PANEL WEU BLACK	For HR2095/90/91 & RI2095
	996510069148	KNOB PANEL CN BLACK-NOT SHOWN	For HR2095/90 China version
	996510069146	KNOB PANEL CN WHITE- NOT SHOWN	For HR2095/30 China version
	996510069151	KNOB PANEL BLACK TW	For /92 version
	996510072934	KNOB PANEL SPRAY PAINT(QUIET)	For HR2195
10	996510056462	INTERLOCK SUPPORT + WIRE	
11	996510061615	SPATULA	
12	996510056473	MEASURING CUP	
13	996510056467	JAR LID	For HR2096/RI2096/2093/2195
	996510059678	JAR LID	For HR2097
14	996510061668	COLLAR	For HR2096/RI2096/2093/2195
	996510061776	COLLAR	For HR2097
15	996510069956	KNIFE UNIT JAR AND SEALING RING	
16	996510060779	XBJ GLASS JAR FOR HR2095/2096	HR2093, HR2195 & See page 5
	996510069749	NEW SODALIME GLASS JAR FOR HR2095/2096	See page 5 for where it using for
	996510059681	STAINLESS STEEL JAR	For HR2097



## New Glass jar implement country list

HR2093

HR2095

HR2096

HR2097

HR2195

HR2196

RI2095

RI2096

Country list : which country will use what kind of glass jar

	XBJ Glass Jar	Sodalime Glass jar
Germany	Y	
France	Y	
Iberia	Y	
Italy	Y	
Benelux	Y	
Nordic	Y	
Chili Santiago		Y
CE Iquique		Y
Dubai	Y	
Peru		Y
Uruguay		Y
Chile		Y
Poland	Y	
Russia	Y	
CEE	Y	
Ukraine	Y	
Hong Kong	Y	
UK	Y	
Thailand		Y
Malaysia		Y
Singapore		Y
Taiwan	Y	
Australia	Y	
Switzerland	Y	
China	Y	
South Korea		Y
Brazil	Y	

HR2096/HR2097 JK motor with MTP implement country

Region	12NC	Implement Country
WEU (SS body)	883209600010	WEU (Germany, Iberia, France, Italy, Benelux, Nordic), Dubai (2-pin), South Africa
WEU (SS jar)	883209700010	France, Peru

# Main Units

HR2093 HR2095 HR2096 HR2097

HR2195 HR2196 RI2095 RI2096

1



2 (second for HR2093)



3



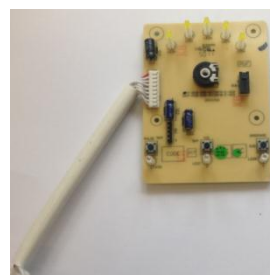
4



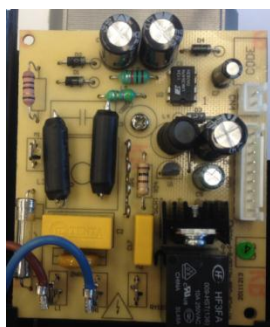
5



6



7



8



9



10



19



17



18



# Accessory view

HR2093 HR2095 HR2096 HR2097  
HR2195 HR2196 RI2095 RI2096

11



14(right for HR2097)



12



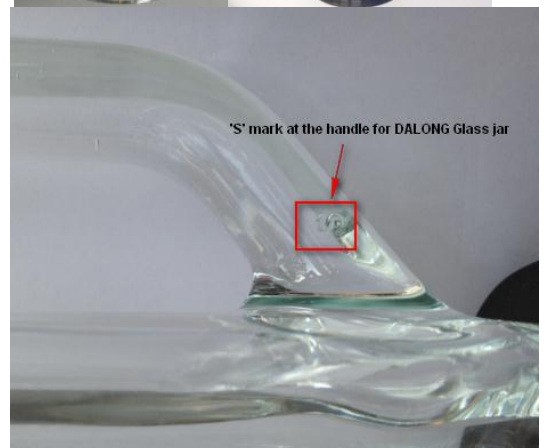
15



13(right for HR2097)

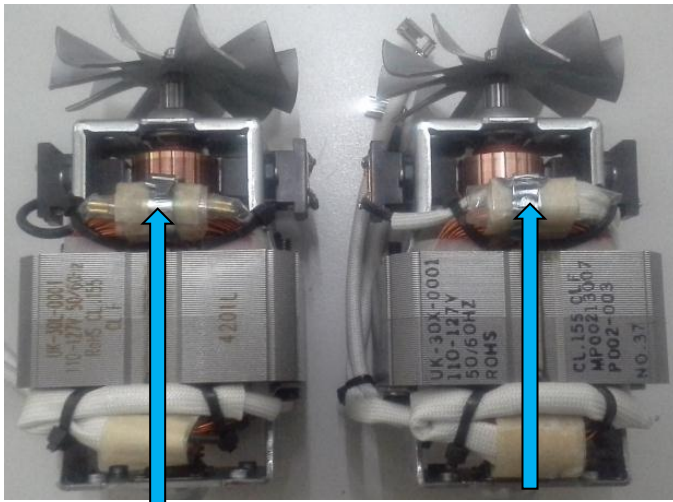


16(right for HR2097)



## Remark:

RI2095/91 & RI2096/01 Brazil version and HR2095/92 & HR2096/02 Taiwan ,  
Change LV Motor with fuse(12NC#996510058297) to LV motor with MTP(12NC#996510072124),  
Implement wk1449 for Brazil version and Taiwan as running change to consume the stock and  
target to implement in 2015.



Thermal Fuse

MTP



# Revision List

# HR2093 HR2095 HR2096 HR2097 HR2195 HR2196 RI2095 RI2096

1	Version A : Initial release.
2	Version B : Adding HR2096/03,RI2096&HR2095/30 China version and RI2095
3	Version C : Correct the supplier's error about the factory code of position 7, so the part 12NC updated; HR2095 Glass jar source change to XBJ and Dalong, and add country list for which country use what kind of glass jar.
4	Version D : Add HR2097; Update spatula and knife unit, old and new ones are interchangeable, also update collar-only HR2095
5	Version E : Glass jar source change to XBJ and Dalong, and add country list for which country use what kind of glass jar-for HR2093,HR2096,HR2097
6	Version F : Update spatula and knife unit, old and new ones are interchangeable, and update collar, also add powercord for HR2096/04 Switzzland.
7	Version G : Update base cover cord hole. also update PCBA and MAIN PCBA which old and new are interchangeable.
8	Version H : Update flange add on three button holes to avoid button jammed issue. All old housing are deleted and change to new housing.
9	Version I : Add HR2096/02 TW version; Implement JK motor and JK MTP motor, JK motor is interchangeable with the formerly motor, but JK MTP motor must use with new main PCBA together-only HR2095
10	Version J: Add HR2096/00 Korea version; Knob panel update, old and new are interchangeable-only HR2095
11	Version K: Implement JK motor and JK MTP motor, JK motor is interchangeable with the formerly motor, but JK MTP motor must use with new main PCBA together-for HR2093,HR2096,HR2097
12	Version L: Knob panel update, old and new are interchangeable.
13	Version M: update TW & LV Main PCBA, old and new are interchangeable, move 996510065754 from item 6 to 7 which is provided wrong information by Supplier before.
14	Version N: implement JK motor for Korea.
15	Version O: update housing thickness, old and new are interchangeable.
16	Version P: Dalong glass jar change supplier.
17	Version Q: add HR2093 and update pos 6 & 15.
18	Version R: HR2096,RI2096 and HR2097 change housing.
19	Version S: change Motor to ALU motor----WK1417.
20	Version T: delete JK motor assy (12NC:996510066362) from all WEU models; change ALU motor without MTP(12NC:996510070326) to ALU motor with MTP (12NC:996510070325) for all APMEA versions except China, Taiwan and Korea; change ALU motor without MTP(12NC:996510070326) to JK motor assy(12NC:996510066362) for Korea version----WK1425.
21	Version U: (Only HR2095&RI2095)For quality issue, change PCBA HV from 996510056485 to 996510071266, PCBA LV from 996510058387 to 996510071267, and China version from 996510056485 to 996510071268 . The old stocks are hold, supplier may send replacements---WK1434.
22	Version V: add new model HR2196 into service manual.---wk1449
23	Version W: Change LV motor with fuse(12NC#996510058297) to LV motor with MTP(12NC#996510072124) for RI2095/91 & RI2096/01 Brazil LV version. Implement wk is wk1449. --- wk1452
24	Version X: Change LV motor with fuse(12NC#996510058297) to LV motor with MTP(12NC#996510072124) for HR2095/92&HR2096/02 Taiwan version. Running change to consume the stock and target to implement in 2015. --- wk1502
25	Version Y: Add new spare part INTERLOCK SEAL HOLDER WITHOUT SPRING (12NC#996510072936 )on position 19 for all models. --- wk1505
26	Version Z: Add new model HR2195/00, HR2195/01, HR2195/04, HR2195/07, HR2195/08 (New model with quiet system). --- wk1505