



Philips Consumer Life Style

# Service Manual

## TECHNICAL INFORMATION

- Power : 800 W; 700W-only for HR2095
- Cord length : 1.0 m
- Dimensions (L x W x H) : 210 x 200 x 430mm(product)
- Voltage / frequency : 220 - 240V / 50 - 60 Hz 110 V / 60 Hz
- Effective jar capacity : 1.5 L
- Capacity blender jar : 2 L
- Max jar capacity : 2 L
- Dimensions (L x W x H) : 210 x 200 x 430mm(product)
- Color : White for 0X version ; Black for 9X version

## Materials:

- Housing : SUS wrap with plastic; PP for HR2095
- Blade : Stainless steel
- Blender jar : Glass for HR2095/RI2096/2093, stainless steel for HR2097

## ASSEMBLY & DISASSEMBLY ADVICE

- No specific issues

## OPTIONAL (accessories)

- No specific issues

## Safety

- This product meets the requirements regarding interference suppression on radio and TV.
- After the product has been repaired, it should function properly and has to meet the safety requirements as officially laid down at this moment.

# Partslists

# HR2093 R2095 HR2096 RI2096 HR2097

Pos	12NC	Description	Remark
1	996510056474	DRIVING COUPLING ASSY	
2	996510070107	HOUSING NEW	
	996510070111	HOUSING CHINA NEW	For HR2096/00 China version
	996510070109	HOUSING BRA NEW	For RI2096
	996510070108	HOUSING TW NEW	For HR2096/02
	996510070193	HOUSING (O.4MM METAL WRAP)	For HR2093
	996510056489	HOUSING WEU WHITE-NOT SHOWN	For HR2095/30/31
	996510056493	HOUSING WEU BLACK	For HR2095/90/91 exclude China
	996510056486	HOUSING CN VERSION BLACK-NOT SHOWN	For HR2095/90 China version
	996510058303	HOUSING CN VERSION WHITE	For HR2095/30 China version
	996510058299	HOUSING BLACK BRA	For RI2095
	996510064113	HOUSING BLACK TW VERSION	For /92 version
3	996510063535	BOTTOM NEW	
4	996510056461	RUBBER FEET	
5	996510056475	SAFETY LEVER	
6	996510069957	MAIN PCBA(CONNECT TO KNOB PANEL)	
	996510069334	MAIN PCBA LV(CONNECT TO KNOB PANEL)	For RI2096/01
	996510069335	MAIN PCBA(CONNECT TO KNOB PANEL)	For HR2096/02
	996510069958	MAIN PCBA(CONNECT TO KNOB PANEL)	For HR2093
	996510063536	MAIN PCBA(CONNECT TO KNOB PANEL)	For HR2095,RI2095/90
	996510069333	MAIN PCBA LV(CONNECT TO KNOB PANEL)	For RI2095/91
	996510069336	MAIN PCBA(CONNECT TO KNOB PANEL)	For /92 version
7	996510063538	PCBA	
	996510059184	PCBA LV	For RI2096/01,HR2096/02
	996510065754	PCBA MTP VERSION	For JK MTP motor version & HR2093
	996510071266	POWER PCBA HV	For HR2095,RI2095/90
	996510071267	POWER PCBA LV	For RI2095/91,HR2095/92
	996510071268	POWER PCBA CCC	For China version
8	996510065753	JK MOTOR WITH MTP	Just for HR2093
	996510066362	JK MOTOR ASSY	For HR2095&HR2096 Korea version
	996510070326	MOTOR ASSY(ALU motor without MTP)	For RI2095&RI2096 HV version
	996510070325	MOTOR ASSY(ALU motor with MTP)	All WEU and APMEA version except Korea, China and Taiwan
	996510066361	JK MOTOR ASSY CHINA VERSION	For HR2095&HR2096/00 China version
	996510058297	MOTOR ASSY LV	For RI2095/91&RI2096/01 LV,HR2095/92&HR2096/02 Taiwan
9	996510069149	KNOB PANEL WEU	
	996510069153	KNOB PANEL CHINA VERSION	For HR2096/00 China version
	996510069152	KNOB PANEL TW	For HR2096/02
	996510069753	KNOB PANEL	For HR2093
	996510069145	KNOB PANEL WEU WHITE-NOT SHOWN	For HR2095/30/31
	996510069147	KNOB PANEL WEU BLACK	For HR2095/90/91 & RI2095
	996510069148	KNOB PANEL CN BLACK-NOT SHOWN	For HR2095/90 China version
	996510069146	KNOB PANEL CN WHITE- NOT SHOWN	For HR2095/30 China version
	996510069151	KNOB PANEL BLACK TW	For /92 version
10	996510056462	INTERLOCK SUPPORT + WIRE	
11	996510061615	SPATULA	
12	996510056473	MEASURING CUP	
13	996510056467	JAR LID	For HR2096/RI2096/2093
	996510059678	JAR LID	For HR2097
14	996510061668	COLLAR	For HR2096/RI2096/2093
	996510061776	COLLAR	For HR2097
15	996510069956	KNIFE UNIT JAR AND SEALING RING	
16	996510060779	XBJ GLASS JAR FOR HR2095/2096	HR2093 & See page 3
	996510069749	NEW SODALIME GLASS JAR FOR HR2095/2096	See page 3 for where it using for
	996510059681	STAINLESS STEEL JAR	For HR2097
17	996510056483	POWER CORDSET VDE	For HR2095/30/90&HR2096/2097/2093
	996510056468	POWER CORDSET CHINA VERSION	For HR2095&HR2096/00 China version
	996510056599	POWER CORDSET 3PIN	For HR2095/31/91&HR2096/01
	996510058302	POWER CORDSET AUS	For HR2096/03
	996510058296	POWER CORDSET BRA	For RI2095& RI2096
	996510061614	POWER CORDSET SWITZLAND	For HR2096/04
	996510064108	POWER CORD TW	For TAIWAN version
	996510064394	POWER CORD KOREA	For HR2095/90 Korea
18	996510056472	TOP COVER	

## New Glass jar implement country list

HR2093

HR2095

HR2096

RI2096

HR2097

Country list : which country will use what kind of glass jar

	XBJ Glass Jar	Sodalime Glass jar
Germany	Y	
France	Y	
Iberia	Y	
Italy	Y	
Benelux	Y	
Nordic	Y	
Chili Santiago		Y
CE Iquique		Y
Dubai	Y	
Peru		Y
Uruguay		Y
Chile		Y
Poland	Y	
Russia	Y	
CEE	Y	
Ukraine	Y	
Hong Kong	Y	
UK	Y	
Thailand		Y
Malaysia		Y
Singapore		Y
Taiwan	Y	
Australia	Y	
Switzerland	Y	
China	Y	
South Korea		Y
Brazil	Y	

HR2096/HR2097 JK motor with MTP implement country

Region	12NC	Implement Country
WEU (SS body)	883209600010	WEU (Germany, Iberia, France, Italy, Benelux, Nordic), Dubai (2-pin), South Africa
WEU (SS jar)	883209700010	France, Peru

# Main Units

# HR2093 R2095 HR2096 RI2096 HR2097

1



2(second for HR2093)



3



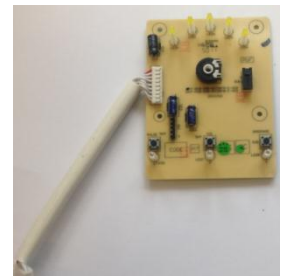
4



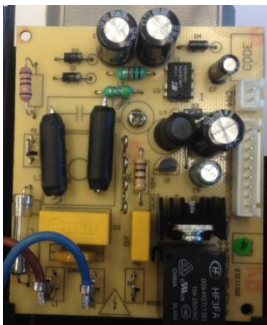
5



6



7



8



9



10



17



18



# Accessorry view

# HR2093 R2095 HR2096 RI2096 HR2097

11



14(right for HR2097)



12



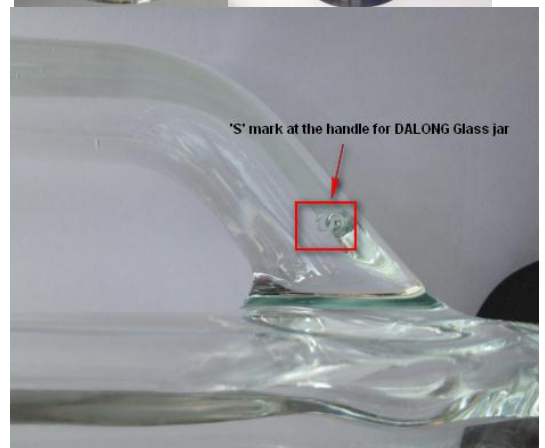
15



13(right for HR2097)



16(right for HR2097)



# Revision List

# HR2093 R2095 HR2096 RI2096 HR2097

- 1 Version A : Initial release.
- 2 Version B : Adding HR2096/03,RI2096&HR2095/30 China version and RI2095
- 3 Version C : Correct the supplier's error about the factory code of position 7, so the part 12NC updated; HR2095 Glass jar source change to XBJ and Dalong, and add country list for which country use what kind of glass jar.
- 4 Version D : Add HR2097; Update spatula and knife unit, old and new ones are interchangeable, also update collar-only HR2095
- 5 Version E : Glass jar source change to XBJ and Dalong, and add country list for which country use what kind of glass jar-for HR2093,HR2096,HR2097
- 6 Version F : Update spatula and knife unit, old and new ones are interchangeable, and update collar, also add powercord for HR2096/04 Switzland.
- 7 Version G : Update base cover cord hole. also update PCBA and MAIN PCBA which old and new are interchangeable.
- 8 Version H : Update flange add on three button holes to avoid button jammed issue. All old housing are deleted and change to new housing.
- 9 Version I : Add HR2096/02 TW version; Implement JK motor and JK MTP motor, JK motor is interchangeable with the formerly motor, but JK MTP motor must use with new main PCBA together-only HR2095
- 10 Version J: Add HR2096/00 Korea version; Knob panel update, old and new are interchangeable-only HR2095
- 11 Version K: Implement JK motor and JK MTP motor, JK motor is interchangeable with the formerly motor, but JK MTP motor must use with new main PCBA together-for HR2093,HR2096,HR2097
- 12 Version L: Knob panel update, old and new are interchangeable.
- 13 Version M: update TW & LV Main PCBA, old and new are interchangeable, move 996510065754 from item 6 to 7 which is provided wrong information by Supplier before.
- 14 Version N: implement JK motor for Korea.
- 15 Version O: update housing thickness, old and new are interchangeable.
- 16 Version P: Dalong glass jar change supplier.
- 17 Version Q: add HR2093 and update pos 6 & 15.
- 18 Version R: HR2096,RI2096 and HR2097 change housing.
- 19 Version S: change Motor to ALU motor----WK1417.
- 20 Version T: delete JK motor assy (12NC:996510066362) from all WEU models; change ALU motor without MTP(12NC:996510070326) to ALU motor with MTP (12NC:996510070325) for all APMEA versions except China, Taiwan and Korea; change ALU motor without MTP(12NC:996510070326) to JK motor assy(12NC:996510066362) for Korea version----WK1425.
- 21 Version U: (Only HR2095&RI2095)For quality issue, change PCBA HV from 996510056485 to 996510071266, PCBA LV from 996510058387 to 996510071267, and China version from 996510056485 to 996510071268 . The old stocks are hold, supplier may send replacements---WK1434.