

Service  
Service  
Service



Philips Consumer Life Style

# Service Manual

## PRODUCT INFORMATION

### Features:

- Powerful 650 W
- Speed control knob
- Special buttons for instant results
- 1,5 Litre glass jar
- Serrated blades
- Detachable knife unit
- Measuring cup 50 ml
- Suction feet
- Cord storage

### Accessories:

- Fruit filter

### Safety:

- Attachment safety system.
- This product meets the requirements regarding interference suppression on radio and TV.
- After the product has been repaired, it should function properly and has to meet the safety requirements as officially laid down at this moment.

## TECHNICAL INFORMATION

- Power : 650 W
- Voltage / frequency : 220 - 240 V / 50 - 60 Hz  
: 110 V / 60 Hz
- Jar capacity : 1,5 Litre
- Speed : 0 - 12000 rpm
- Cord length : 120 cm
- Packaging - F-Box
- Dimensions (L x W x H) : 330 x 185 x 370 mm
- Weight : 5,1 kg
- Length : 190 mm
- Width : 150 mm
- Height : 190 mm (only Power unit)
- Height with Jar + Lid : 395 mm

### Materials:

- Housing : ABS plastic
- Jar : Borosilicate Glass
- Knife unit : Stainless steel
- Jar lid : PP + rubber
- Measuring cup : SAN
- Bottom + 2 sides : ABS
- Switch : ABS lacquered

## DISASSEMBLY- AND RE-ASSEMBLY ADVISE

- No specific issues.

## REPAIR INSTRUCTION

- No specific issues.

## OPTIONAL (accessories)

- No specific issues.

| Pos | Service code   | Description  |
|-----|----------------|--|
| 1   | 9965 000 28659 | Blender coupling   |
| 2   | 9965 000 28660 | Motor HV 220 -240/50-60 HZ                                   |
|     | 9965 100 59747 | Motor HV 220 -240/50-60 HZ AI wire motor version (not shown) |
|     | 9965 000 28661 | Motor LV - 110 V / 60 Hz                                     |
| 3   | 9965 000 28662 | Housing IEC 4.0A   |
|     | 4203 035 93971 | Housing IEC 4.0B   |
|     | 4203 035 87160 | Housing IEC 5.0  |
| 4   | 4203 035 95741 | Airtunnel IEC 4.0A + IEC 4.0B                                |
|     | 4203 035 88230 | Airtunnel IEC 5.0  |
|     | 9965 100 59754 | Airtunnel IEC 5.0 for AI wire motor version (not shown)      |
| 5   | 9965 000 28664 | Safety lever IEC 4.0A + IEC 4.0B                             |
|     | 4203 035 88240 | Switch actuator IEC 5.0                                      |
| 6   | 4203 035 88390 | Safety spring IEC 5.0  |
| 7   | 9965 000 28665 | Safety switch assy IEC 4.0A                                  |
|     | 4203 035 88250 | Safety Switch assy A IEC 4.0B                                |
| 8   | 4203 035 88260 | Safety Switch assy B IEC 5.0                                 |
| 9   | 9965 000 28666 | Crimp  |
| 10  | 9965 000 28667 | Speed indication window                                      |
| 11  | 9965 000 28668 | PCB - Switch assy - HV IEC 4.0A + IEC 4.0B                   |
|     | 4203 035 88790 | PCB HV IEC 5.0   |
|     | 4203 035 88800 | PCB LV IEC 5.0   |
|     | 4203 035 88810 | PCB Korea IEC 5.0  |
| 12  | 9965 000 28669 | Bottom   |
|     | 9965 100 59753 | Bottom for AI wire motor version (not shown)                 |
| 13  | 9965 000 28670 | Cordset EU   |
|     | 9965 000 28671 | Cordset Singapore  |
|     | 9965 000 28672 | Cordset Korea  |
|     | 9965 000 28673 | Cordset Taiwan   |
|     | 4203 035 95751 | Cordset CN   |
| 14  | 9965 000 28674 | Measuring cup  |
| 15  | 9965 000 28675 | Jar Lid IEC 4.0A + IEC 4.0B                                  |
|     | 4203 035 88820 | Jar Lid IEC 5.0  |
| 16  | 9965 000 28676 | Glass Jar IEC 4.0A + IEC 4.0B                                |
|     | 4203 035 88840 | Glass Jar IEC 5.0  |
| 17  | 9965 000 28677 | Sealing ring IEC 4.0A + IEC 4.0B                             |
|     | 4203 035 88290 | Sealing ring IEC 5.0   |
| 18  | 9965 000 28678 | Knife unit IEC 4.0A + IEC 4.0B                               |
|     | 4203 035 88300 | Knife unit IEC 5.0   |
| 19  | 9965 000 28679 | Interface IEC 4.0A   |
|     | 4203 035 93981 | Interface IEC 4.0B   |
|     | 4203 035 87170 | Interface IEC 5.0  |
|     | 9965 100 59752 | Interface new collar design IEC 5.0 (not shown)              |
|     | 9965 100 59755 | Interface dark grey new collar design IEC 5.0 (not shown)    |
| 20  | 9965 000 28727 | Fruitfilter IEC 4.0A + IEC 4.0B                              |
|     | 4203 035 88310 | Fruitfilter IEC 5.0  |

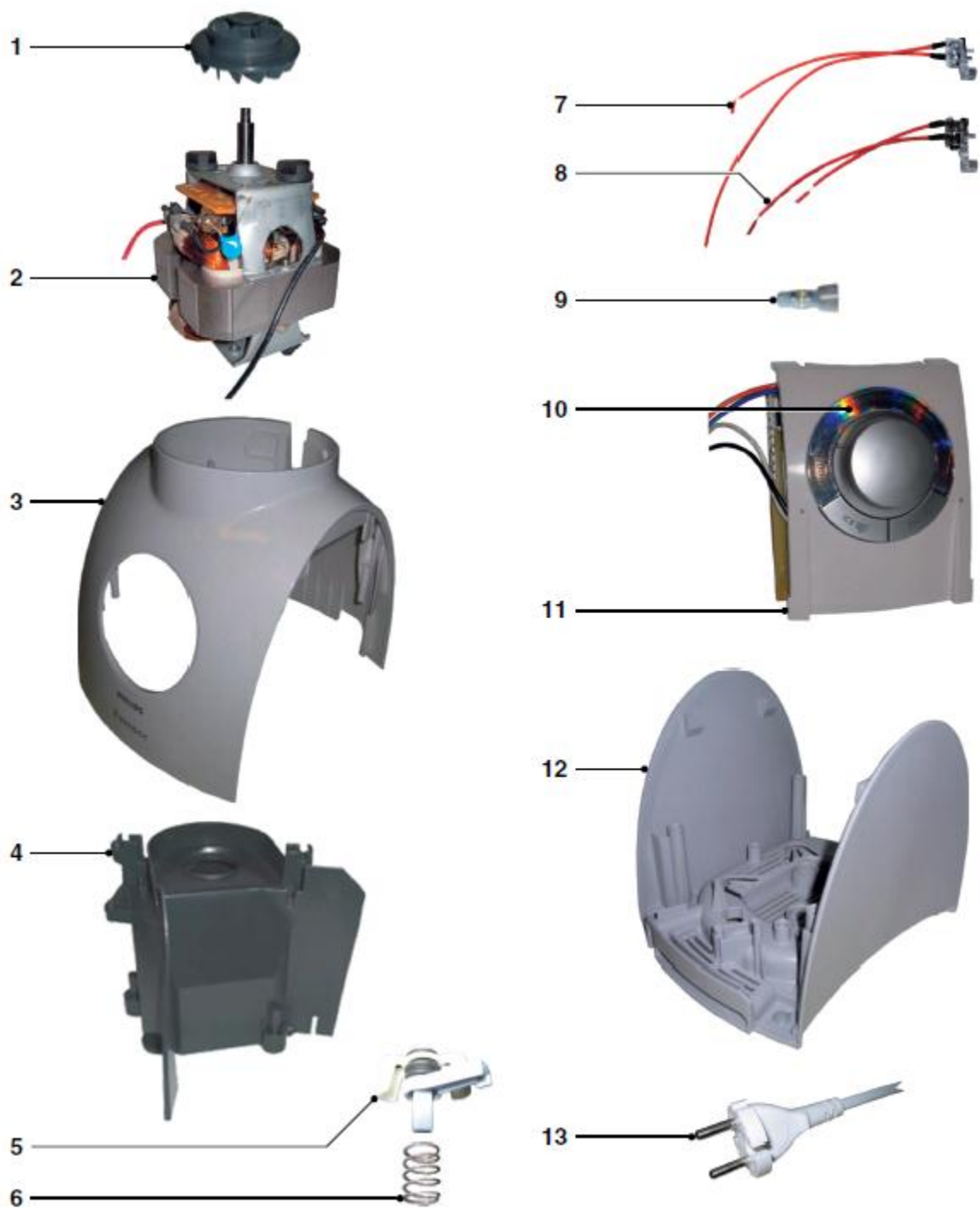
Please use the parts like below IEC explanation:

IEC 4.0A : Production week till 0813

IEC 4.0B : Production week between 0814 - 0906

IEC 5.0 : Production week from week 0907 onwards

AI motor version : Production week from week1234 onwards except  
PRC & LV version





Change affect:

Cord Press Plate Design Change

- Design change on cord fixing method for cost reduction (eliminated 1pc cord press plate and 2 pcs screw) and it would applied with Al-wire motor together.



Copper-wire Motor Version

Al-wire Motor Version

Bottom Cover

- There is a "AL" marking in Al-wire motor version as shown below



Copper-wire Motor Version

Al-wire Motor Version

Air Guide

- There is an extra cord pressing feature in Al-wire motor version as shown below

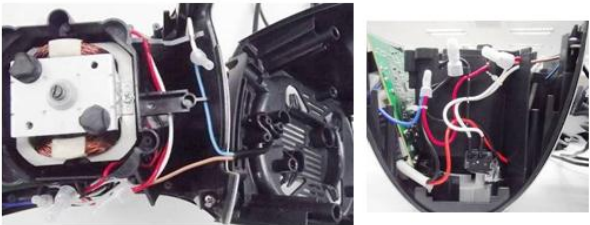


Copper-wire Motor Version

Al-wire Motor Version

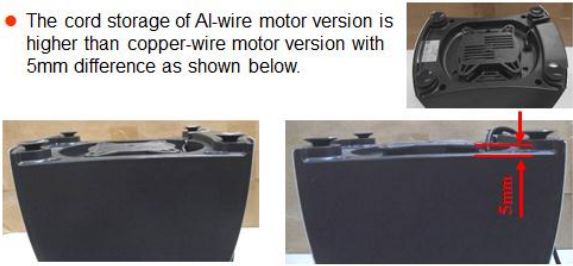
Internal Wiring Method

- Below to show the internal wiring method of Al-wire motor version in details



Construction Difference From Power Unit

- The cord storage of Al-wire motor version is higher than copper-wire motor version with 5mm difference as shown below.



Copper-wire Motor Version

Al-wire Motor Version

Version A: Consolidate the formerly Joachim Service manuals and change copper wire motor to Al motor, change items include HV motor, Airtunnel, bottom which apply to all versions except PRC and LV motor version, also there is a new collar design for the interface, this change apply to all versions.